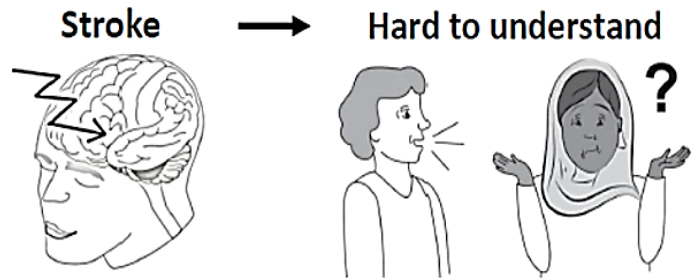


PLORAS

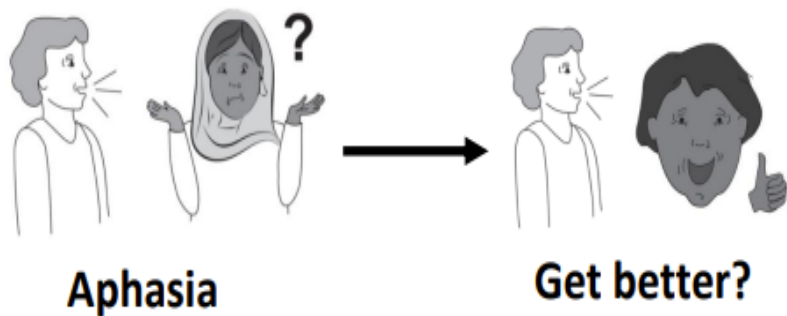
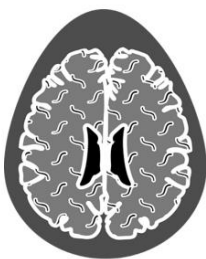
Predicting Language Outcome and Recovery After Stroke

Do you have **spoken communication difficulties** caused by **stroke**?



The **PLORAS Research Team** would like to:

- **Look** at your hospital **brain scan**
- and **monitor** your **language recovery**



For **more information contact:**

Your local hospital:

PLORAS: ✉ ploras@ucl.ac.uk ☎ 020 7813 1538 💻 www.ucl.ac.uk/ploras